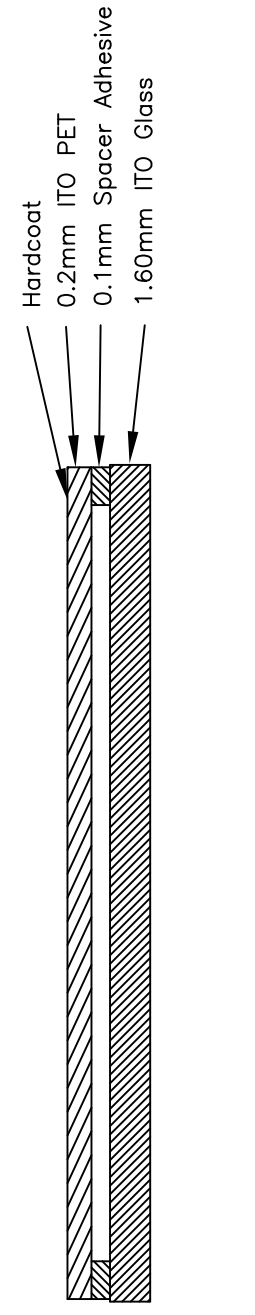
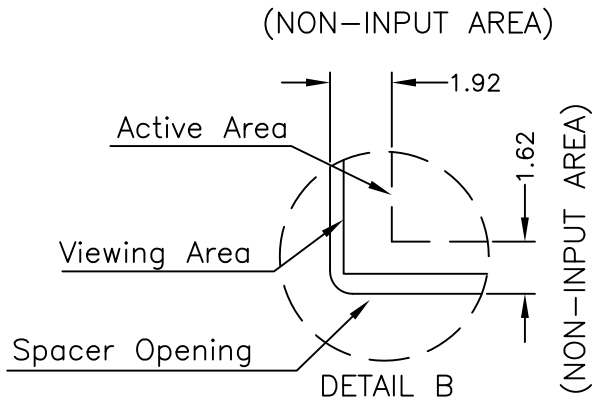
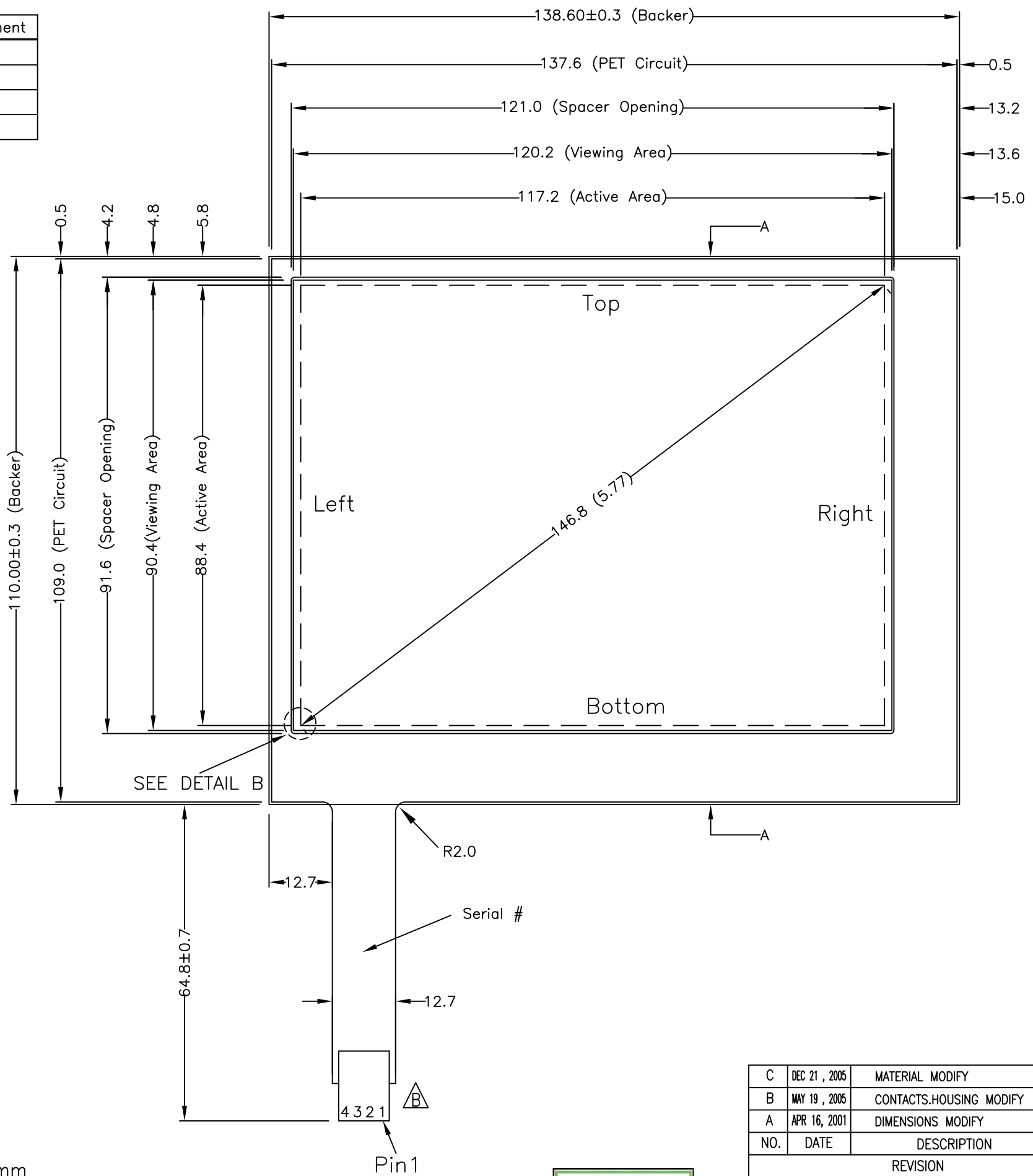


FRONT VIEW

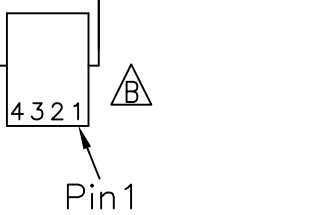
Pin #	Assignment
1	Top
2	Right
3	Bottom
4	Left



SECTION A-A

NOTES:

1. ITO GLASS THICKNESS : 1.60mm
  2. OVERALL THICKNESS : 1.90±0.10mm
  3. CONNECTOR AND PINOUT AS INDICATED
  4. FRONT SURFACE : ANTI-GLARE HARDCOAT
  5. LAYER TO LAYER ASSEMBLY TOLERANCE: ±0.50mm
  6. TAIL TYPE : INTEGRAL PET FILM WITH AMP-C , GOLD-PLATED CONTACTS
  7. OTHER SPEC : SEE APPROVED SHEET
- \*BEFORE DESIGN PLEASE REFER TO THE INTEGRATION GUIDE



NO.	DATE	DESCRIPTION	CHK
C	DEC 21 , 2005	MATERIAL MODIFY	ALEX
B	MAY 19 , 2005	CONTACTS.HOUSING MODIFY	ALEX
A	APR 16, 2001	DIMENSIONS MODIFY	ALEX

REVISION			
CHIEF OF DESIGN		APPROVED	Grace
ENGINEER		PROJECT MANAGER	
DRAWN BY	Bruce	DATE	May. 03, 2012
SHT 1 OF 1		REV.	C

Apex Material Technology Corp.

TOLERANCES UNLESS SPECIFIED		MODEL NAME : 9503 DWG NO : 9503-3-013 SCALE: 1:1 UNIT: mm
.X	± 0.50	
.XX	± 0.25	
.XXX	± 0.10	
ANGULAR	.	