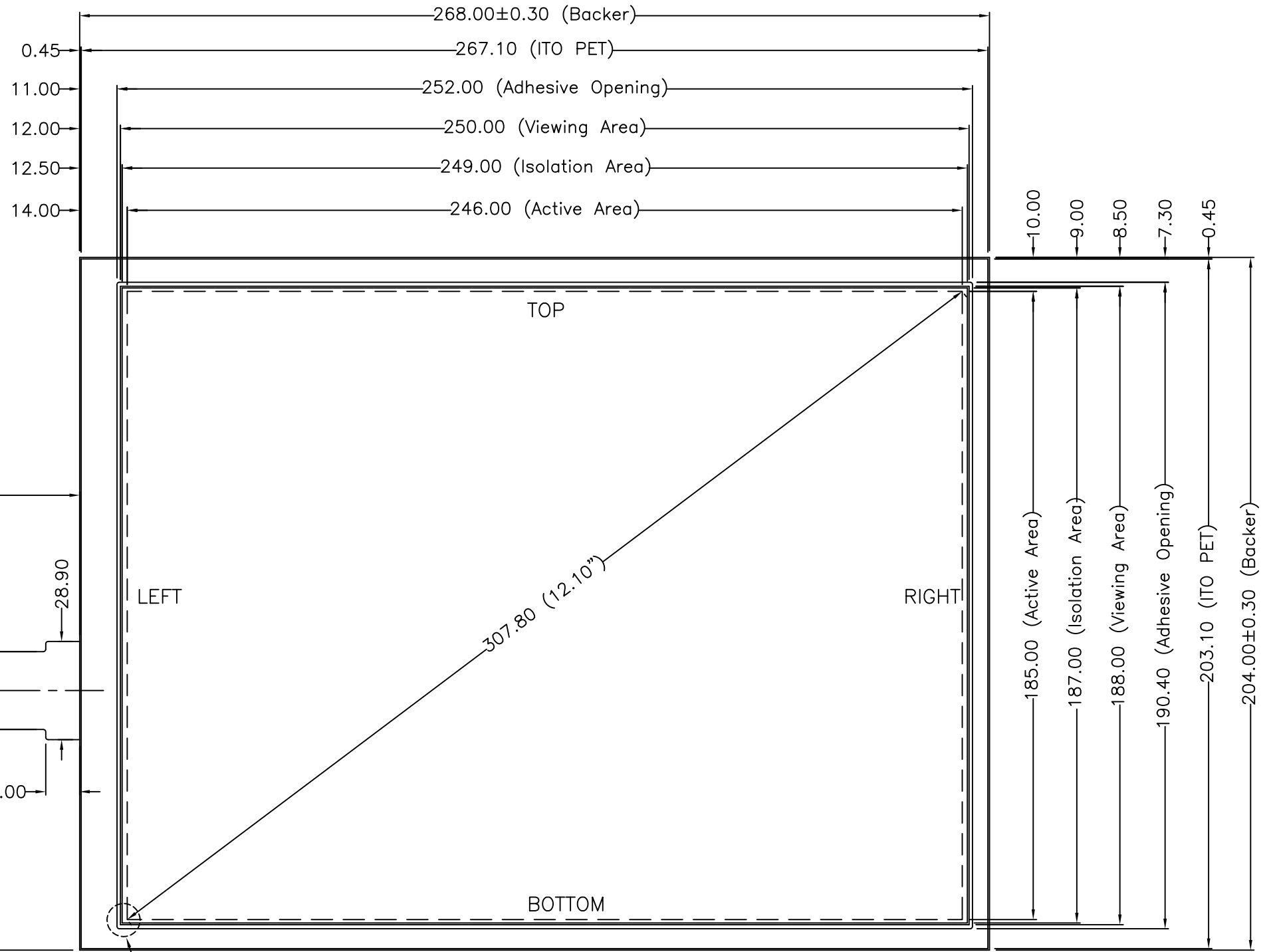
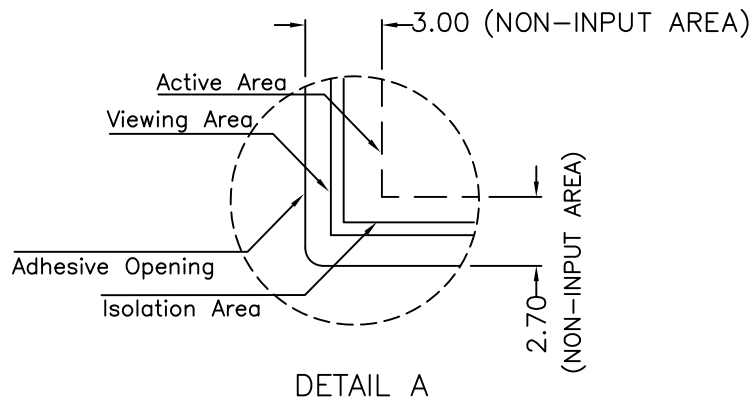
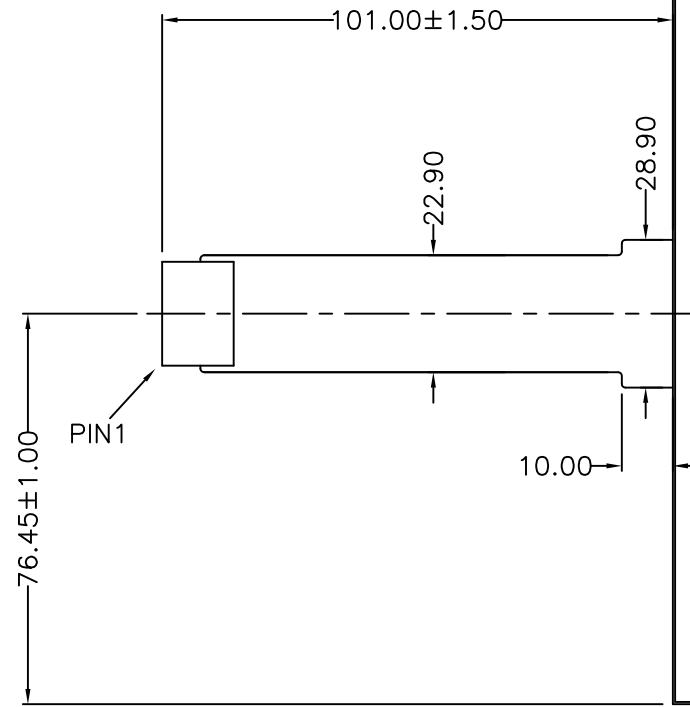


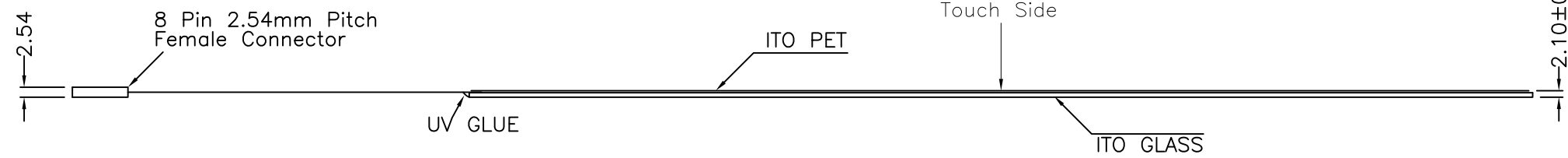
TOUCH SIDE VIEW



Pin #	Assignment
1	Right
2	Right sense
3	Left sense
4	Left
5	Bottom
6	Bottom sense
7	Top sense
8	Top



SEE DETAIL A



NOTES:

1. ITO GLASS THICKNESS : 1.80mm
 2. OVERALL THICKNESS : 2.10±0.20mm
 3. CONNECTOR AND PINOUT AS INDICATED
 4. FRONT SURFACE : ANTI-GLARE HARDCOAT
 5. LAYER TO LAYER ASSEMBLY TOLERANCE: ±0.50mm
 6. TAIL TYPE : IMMERSION GOLD PLATED FPC WITH AMP-C TIN PLATED CONTACTS
 7. OTHER SPEC : SEE APPROVAL SHEET
- *BEFORE DESIGN PLEASE REFER TO THE INTEGRATION GUIDE



A	SEP 5, 2005	MODIFY CIRCUIT & TAIL TYPE	ALEX
NO.	DATE	DESCRIPTION	CHK
REVISION			
CHIEF OF DESIGN		APPROVED	Grace
ENGINEER		PROJECT MANAGER	
DRAWN BY	Bruce	DATE	May 10, 2012
		REV.	A
SHT 1 OF 1			

Apex Material Technology Corp.	
TOLERANCES UNLESS SPECIFIED	
.X	± 0.50
.XX	± 0.50
.XXX	± 0.30
ANGULAR	.
MODEL NAME :	9534
DWG NO :	9534-1-013
SCALE: 1:1 UNIT: mm	