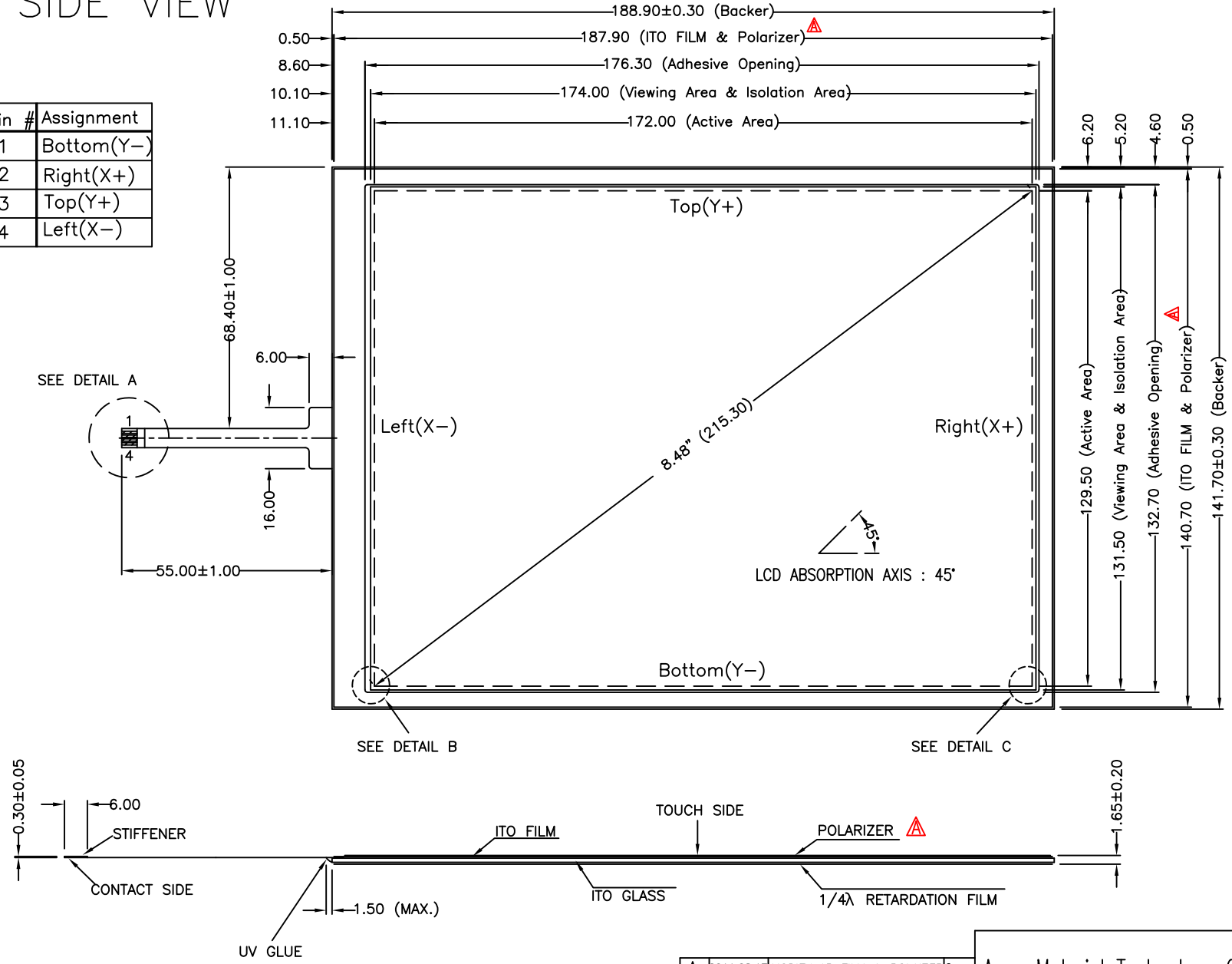
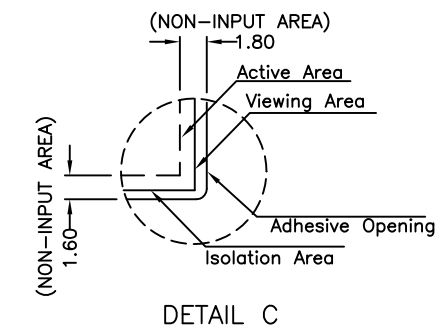
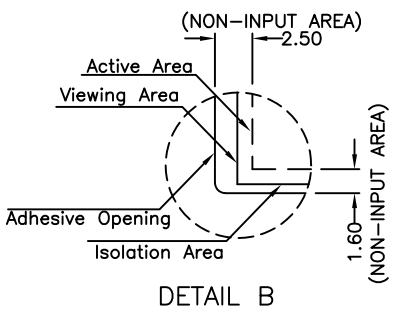
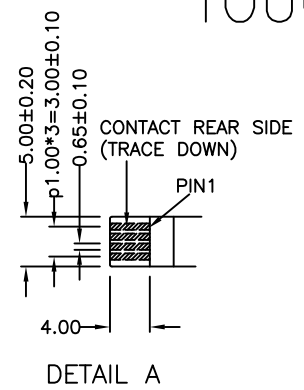


TOUCH SIDE VIEW

Pin #	Assignment
1	Bottom(Y-)
2	Right(X+)
3	Top(Y+)
4	Left(X-)



- NOTES:
1. ITO GLASS THICKNESS : 1.10mm
 2. OVERALL THICKNESS : 1.65±0.20mm
 3. CONNECTOR AND PINOUT AS INDICATED
 4. FRONT SURFACE : ANTI-GLARE HARDCOAT
 5. LAYER TO LAYER ASSEMBLY TOLERANCE : ±0.50mm
 6. TAIL TYPE : IMMERSION GOLD PLATED FPC , ZIF
 7. OTHER SPEC : SEE APPROVAL SHEET



NO.	DATE	DESCRIPTION	CHK
A	2011.08.17	MODIFY AR FILM & POLAIZER	Grace
REVISION			
CHIEF OF DESIGN	APPROVED	Grace	
ENGINEER	PROJECT NUMBER		
DRAWN BY	DATE	AUG. 18, 2011	
SHT 1 OF 1	REV.	A	

Apex Material Technology Corp.

TOLERANCES UNLESS SPECIFIED		MODEL NAME : 70032
.X	± 0.50	DWG NO : 70032-1-01
.XX	± 0.50	
.XXX	± 0.30	
ANGULAR	.	SCALE: 1:1 UNIT: mm