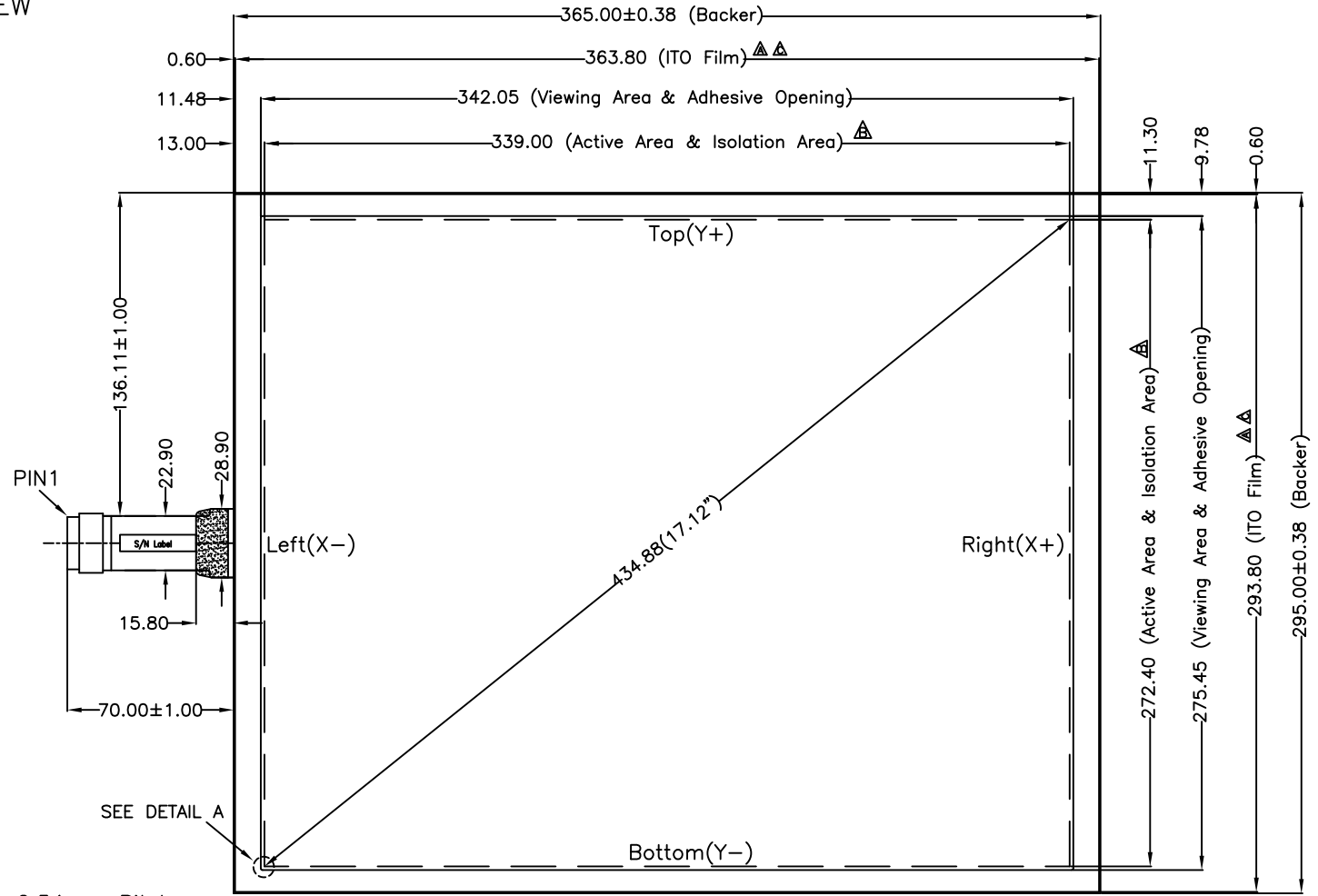
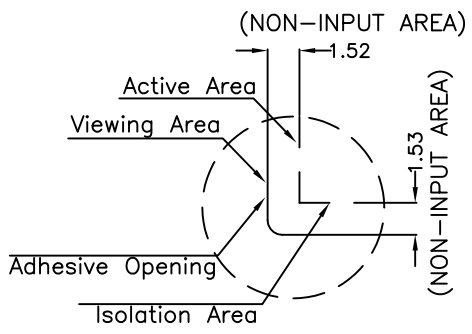
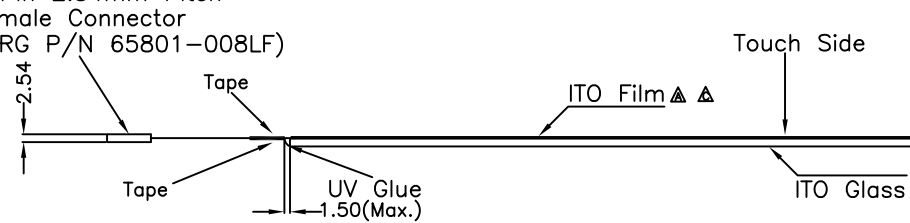


TOUCH SIDE VIEW

Pin#	Assignment
1	Top(Y+)
2	Top sense(Y+)
3	Bottom sense(Y-)
4	Bottom(Y-)
5	Left(X-)
6	Left sense(X-)
7	Right sense(X+)
8	Right(X+)



8 Pin 2.54mm Pitch Female Connector (BERG P/N 65801-008LF)



NOTES:

1. ITO GLASS THICKNESS : 2.80mm
 2. OVERALL THICKNESS : 3.20±0.20mm
 3. CONNECTOR AND PINOUT AS INDICATED
 4. FRONT SURFACE : ANTI-GLARE HARDCOAT
 5. TAIL TYPE : IMMERSION GOLD PLATED FPC WITH BERG CONNECTOR
 6. CONNECTOR : BERG P/N 65801-008LF
 7. OTHER SPEC : SEE APPROVAL SHEET
- *BEFORE DESIGN PLEASE REFER TO THE INTEGRATION GUIDE

NO.	DATE	DESCRIPTION	CHK
C	MAR 12, 2006	ITO PET MODIFY	Alex
B	JUL 31, 2007	ISOLATION AREA & ISOLATION MATERIAL MODIFY	Alex
A	DEC 8, 2006	ITO PET MODIFY	Alex

REVISION		
CHIEF OF DESIGN	APPROVED	Grace
ENGINEER	PROJECT MANAGER	
DRAWN BY	Bruce	DATE May. 16, 2012
SHT 1 OF 1	REV.	C

Apex Material Technology Corp.

TOLERANCES UNLESS SPECIFIED	
.X	± 0.50
.XX	± 0.50
.XXX	± 0.30
ANGULAR	.

MODEL NAME : 09547-02
 DWG NO : 09547-02-3-011
 SCALE: 1:1 UNIT: mm

