

PenMount 6202B Control Board Data Sheet

RoHS compliance

PenMount 6202B Control Board integrated features and functions for 4- and 5- wire resistive touch screens; both USB and RS-232 interface with auto-detection; complemented by the superbly developed PenMount drivers with auto installation driver capability.

PenMount 6202B Control Board using PenMount 6000 controller that has been designed for those who may like and all-in-one solution with A/D converter built-in to make the total printed circuit board denser. PM6202B was designed-in with two kinds of connector. One is connected with touch screen directly for 4-wire or 5-wire selective. Another is supported to both of RS232 and USB interface.

◆ Specifications:

Touch Screen	For 4- or 5-wire analog resistive touch screens	
Interface	USB	Full speed 12MHz bps
	RS232	9600 baud rate non-PnP mode
Touch Screen Controller	PenMount 6000 controller IC	
Resolution	2048x2048	
Dimension holes	(L)70.0mm x (W)20.0mm x (H)10.3mm (max), two 3.0 φ screw	
Connector	ZIF connector or Wafer connector on board for touch screen	
Diagnostic	LED on board	
Cursor accuracy	< 1% (Active Area Diagonal of touch screen with PenMount Advanced calibration utility support)	
Resistance range	30 ~ 1.3K ohm	
Operating Voltage	+5V DC	
Power Consumption	Standby Mode : 13.8 mA ; Active Mode : 21.8 mA (VCC=+5V, Top sheet Panel Resistance: 365 ohm ; Bottom sheet Panel Resistance: 660 ohm) Note. Actual current will be different by touch panel's resistance.	
Electro Static Discharge (ESD)	Air Discharge 15KV , Contact Discharge 8KV	
Storage Temperature	-40 °C ~ 85 °C	
Operating Temperature	-20 °C ~ 70 °C	

◆ Driver Software:

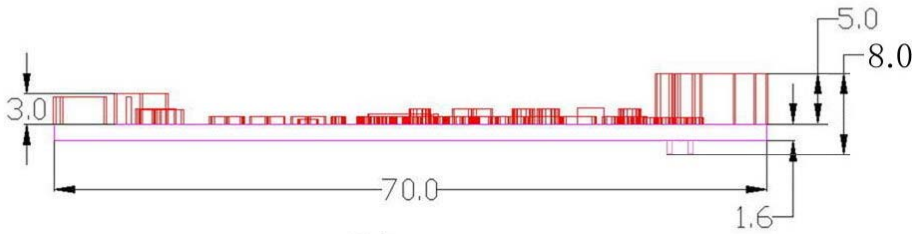
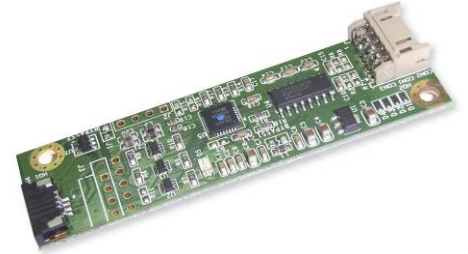
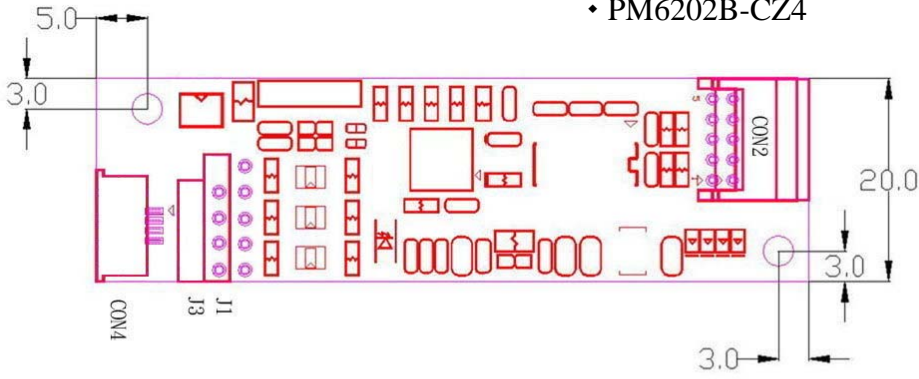
RS232 interface : DOS, Windows 2000/ XP/ XPE/ 2003/ Vista/ 7, WinCE 4.2/ 5.0/ 6.0, Linux (Kernel 2.6 and X-Window mode), QNX 6.2/ 6.3/ 6.4

USB interface : Windows 2000/ XP/ XPE/ 2003/ Vista/ 7, WinCE 4.2/ 5.0/ 6.0, Linux OS (Kernel 2.6 and X-Window mode), QNX 6.2/ 6.3/ 6.4 (Inbox support)

PenMount 6202B Control Board Data Sheet

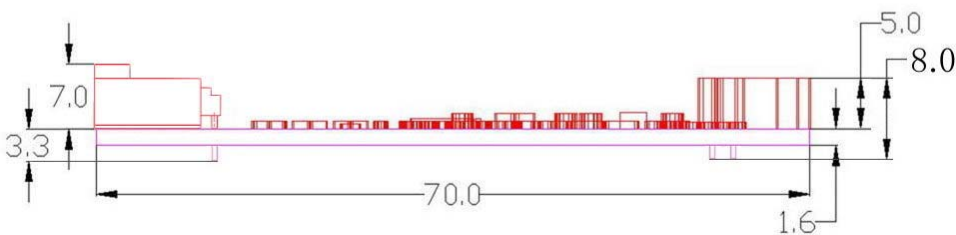
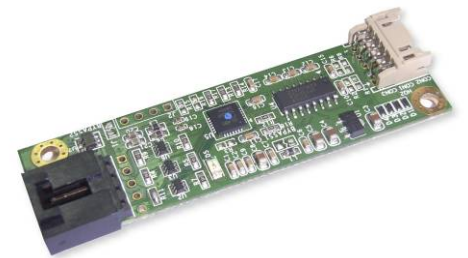
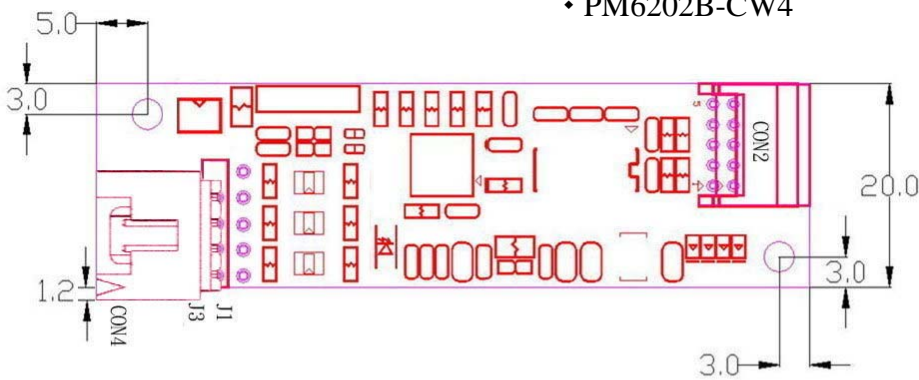
◆ Mechanical Drawing:

◆ PM6202B-CZ4



Unit : mm

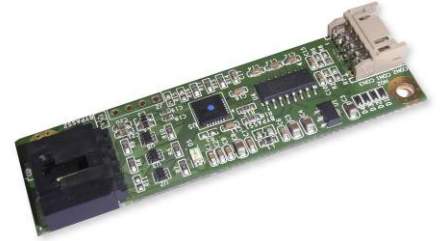
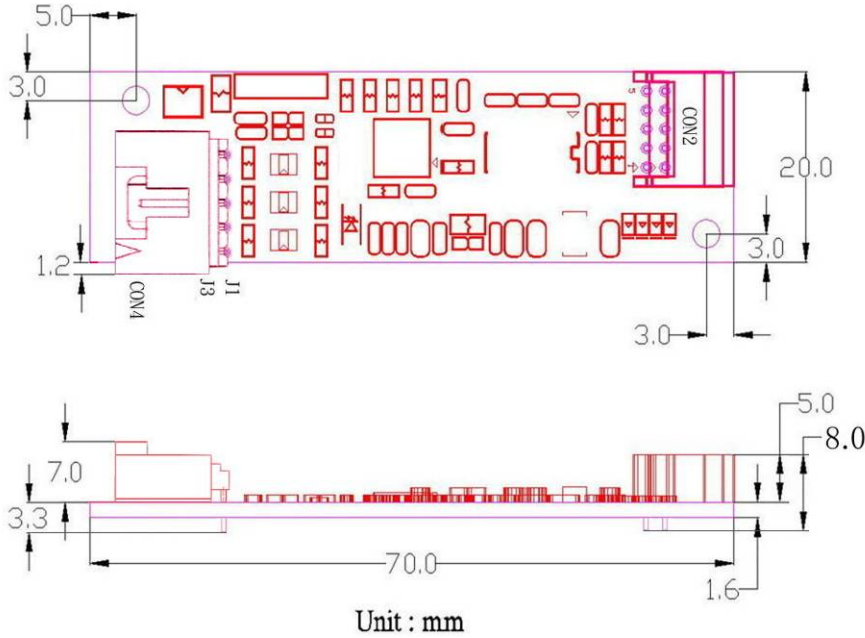
◆ PM6202B-CW4



Unit : mm

PenMount 6202B Control Board Data Sheet

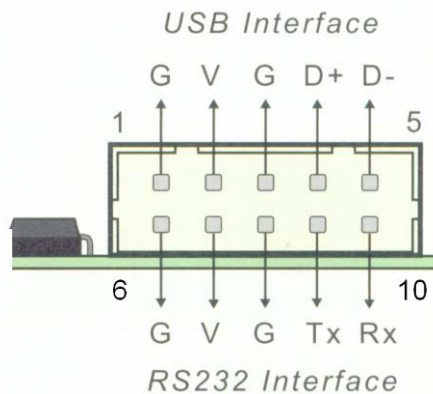
◆ PM6202B-CW5



◆ Connector and Jumper definition:

CON2:
For USB and RS-232 Interface:

J1 / J3 / CON4 / CON5:
Connect to 4- and 5-wire Touch Screen:



	J1 / CON5 (5-wire)	J3 (4-wire)	CON4 (4-wire)
PIN 1	UL (Y)	Top	Top
PIN 2	UR (H)	Left	Left
PIN 3	Sense (S)	Bottom	Bottom
PIN 4	LL (L)	Right	Right
PIN 5	LR (X)	N/A	N/A

The available 6202 control board :

- PM6202B-CW5 : 5-wire, Wafer Connector pitch 2.54mm ; RS232 & USB COMBO Interface
- PM6202B-CW4 : 4-wire, Wafer Connector pitch 2.54mm ; RS232 & USB COMBO Interface
- PM6202B-CZ4 : 4-wire, ZIF Connector pitch 1.0mm (Dual side) ; RS232 & USB COMBO Interface